



Connected Business.

A great experience, not just products and services.

Camera Tracking Solutions for Vehicles & More

Innovative, fully integrated live tracking solution



Capturing footage from vehicles and other motorised assets with mounted cameras provides an accurate witness which can give irrefutable evidence in the case of false claims, crash for cash incidents, driving offence allegations and vandalism.

A tried and tested tool to assist fleet operators in managing their fleet and to lower risk on the road, as well as helping operations professionals in a wide variety of additional sectors to minimise false claims.

Forward & Driver Facing Camera Options

Improve Driver Behaviour & Visibility

Reduce Insurance Claims & Mitigate Damage Liability



All-in-one design, easy for installation and maintenance
Managed seamlessly through our Foretrack Connect platform

Visibility

Communication

Evidence

Contact us today for more information:

Tel: 0330 094 5344
sales@foresolutions.co.uk
www.foresolutions.co.uk





Camera Tracking Management: The Foretrack Connect Platform



Running a vehicle fleet can be a constant challenge, particularly when it comes to managing and monitoring how vehicles are used on the road.

High costs associated in maintaining and keeping vehicles on the road, such as; general wear and tear, fuel use and even accidents puts a Fleet manager in a position of least control.

In response to these challenges an increasing number of fleet operators are implementing vehicle tracking. Our solution also offers full camera integration so you can keep everything in sight and mitigate false claims.

Managing a fleet effectively assists in a decrease in accidents, a reduction in claims, an increase of efficiency and substantial fuel savings.



Keeping You In Control

- > Web- Based Solution
- > 24/7 Real Time Access
- > Fleet Utilisation
- > Driver Behaviour Dashboard
- > Real Time Location Visibility
- > Historical Data
- > Geofenced Areas
- > Alarms and Alerts
- > Security and Protection
- > Speed, Acceleration, Harsh Braking
- > Mileage, Servicing, MOT and Insurance
- > Panic Buttons
- > Drive ID through recognition or a device



Why choose Foretrack Connect?

- > Super-quick setup
- > 100% satisfaction guarantee
- > Flexible contracts
- > Lifetime hardware warranty



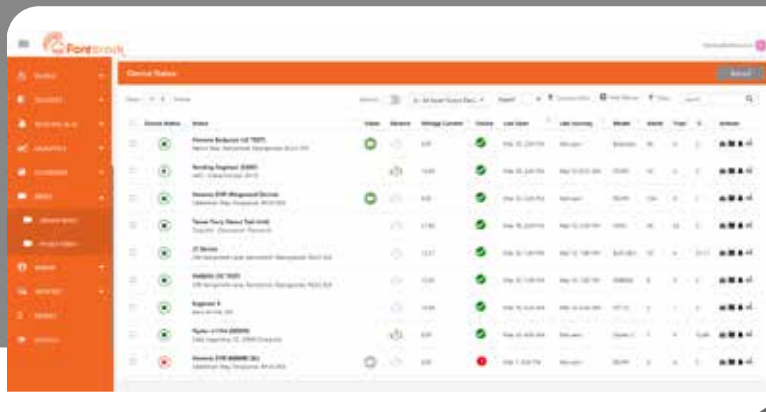
Contact us today for more information:

Tel: 0330 094 5344
sales@foresolutions.co.uk
www.foresolutions.co.uk



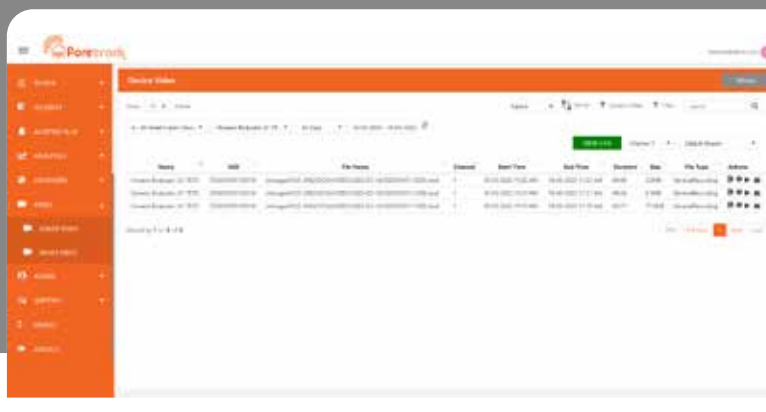
Camera Device Visibility

- Your devices dashboard has a column named "Video" indicating any video enabled device.
- Video devices that are online will have their video icon showing as green, offline as grey



Accessing Video Footage Directly From The Device or Server

- You can use the "Device Video" option or the "Server Video". Footage gets uploaded to the server for secure storage, or you can choose to access via the device to see live files if the device is online.



Live Video Footage View

- Each video device has the ability to view the live stream
- Select the Device details for location data and other information about allocated vehicle, asset and driver ID.



Contact us today for more information:

Tel: 0330 094 5344
 sales@foresolutions.co.uk
 www.foresolutions.co.uk



Vehicle Camera Solutions: Dashcam Product Features & Benefits

Vehicle incidents and insurance claims are time-consuming issues for all involved. Using camera solutions within your fleet takes away the false claims, ifs and whens.

Camera solutions give you the solid evidence you need to protect your fleet, drivers and business.

Installing a camera solution into any fleet will also benefit the company by encouraging improved driver behaviour and best practice whilst on the road. This in turn leads to less vehicle damage and accidents.

- Protect your drivers and business from driving offense allegations
- What happened before, during & after an incident?
- No more 50/50 claims or conflicting reports of events
- Reduce stress & provide peace of mind for directors, fleet managers and drivers
- Vehicle location & real time live tracking
- Audio capability
- Driving style (speed, acceleration, braking, and steering)
- Multiple camera options
- Wide angle lens to see the bigger picture
- Stream data remotely via 4G & 5G
- Visibility of your loads

Our Full HD All-In-One Dashcam Features

- Wide angle 1080p video recording and streaming to provide driver's view of the road
- Support 5 seconds of video recording in abnormal power shutdown or extreme accidents condition
- Easy configuration and viewing via mobile App
- Dual TF cards for sufficient storage, each TF supports up to 256GB
- One-key click for SOS alarm and video upload
- Built-in LTE, Wi-Fi, GPS modules
- Built-in mic and speaker for two-way communications
- Self-inspection for device health check
- Extendable for max. 4 cameras totally



From this...



Above is a typical example of how a claim is reported to an insurer.

The process is extensive and can cause significant delays. This can have an adverse effect on the cost of the claim.

To this...



Foretrack Camera Solution notifies the insurer immediately.

This enables the insurer to contact the broker / policy holder within minutes of the incident, where decision on how best to handle the claim is made.



Mobile Digital Video Recorder (MDVR) Camera Hardware Options

As well as incidents arising from road travel, there are numerous other situations where you need visibility of your operations on site and in transit. MDVRs enable you to set up multiple cameras to manage a variety of motorised or non-motorised assets and keep your operations under strict surveillance.

In addition to dash cams and body cams, we are also able to offer a full range of mobile MDVRs, including SD card type MDVR and HDD type MDVR, covering from 2 channel super mini MDVR, up to 12 channel hybrid MDVR, to meet the requirements of different sectors. A variety of cameras can then be selected to serve your surveillance objective. We offer analogue and IP options.

Camera solutions add value to many diverse businesses: from airport ground handling and construction sites to event management and more, our camera tracking can give you added protection and peace of mind.

1 Tell us what you want to monitor and where the cameras need to go.

2 We'll review your requirements and recommend the suitable hardware.

3 Solution set-up, installation, reporting and dashboard configuration & testing.

The Black Box Recorder

Designed for commercial vehicle scenarios which require more than 1 month recording of video footage and tracking & alert information, the HDD mobile DVR models utilise the industry-leading anti-vibration technology, to protect the hard disk in harsh environments on commercial vehicles, to ensure the recording reliability. Features include:

- Supports 4 ch AHD 1080P cameras and 1ch IPC up to 1080P
- Industry-leading CPU with powerful processing ability
- Supports HDD/SSD for recording. Max. 2TB
- Dual streams for local recording and wireless transmission
- Supports 3G/4G, WIFI, GPS modules
- Supports built-in G-sensor for harsh acceleration detection
- Support 1x USB2.0. front panel USB, for upgrading, and exporting video
- Support 8-36V wide range power input, adapt to the harsh environment
- Data self-protection, save data when shut down abnormally



The Cameras

A selection of analogue, IP and USB camera are available. This model is from the IP range and has the following features:

V19 Front/Rear View IP Camera can support in-vehicle installations, which provides stable front viewing for commercial vehicles.

- Outdoor vandal-resistant: IP68
- Max video resolution: 1920*1080
- Fixed focal megapixel lens, angle adjustable
- Mounting: Outdoor/Indoor
- PoE (Power over Ethernet) for easy installation

